

# SPOTTING THE BLUE SPOT

SEGMENTATION OF THE LOCUS  
COERULEUS NOW AUTOMATED

MAX PLANCK INSTITUTE  
FOR HUMAN DEVELOPMENT



**SUPERVISORS:**

AGNIESZKA KULESZA  
MARTIN DAHL

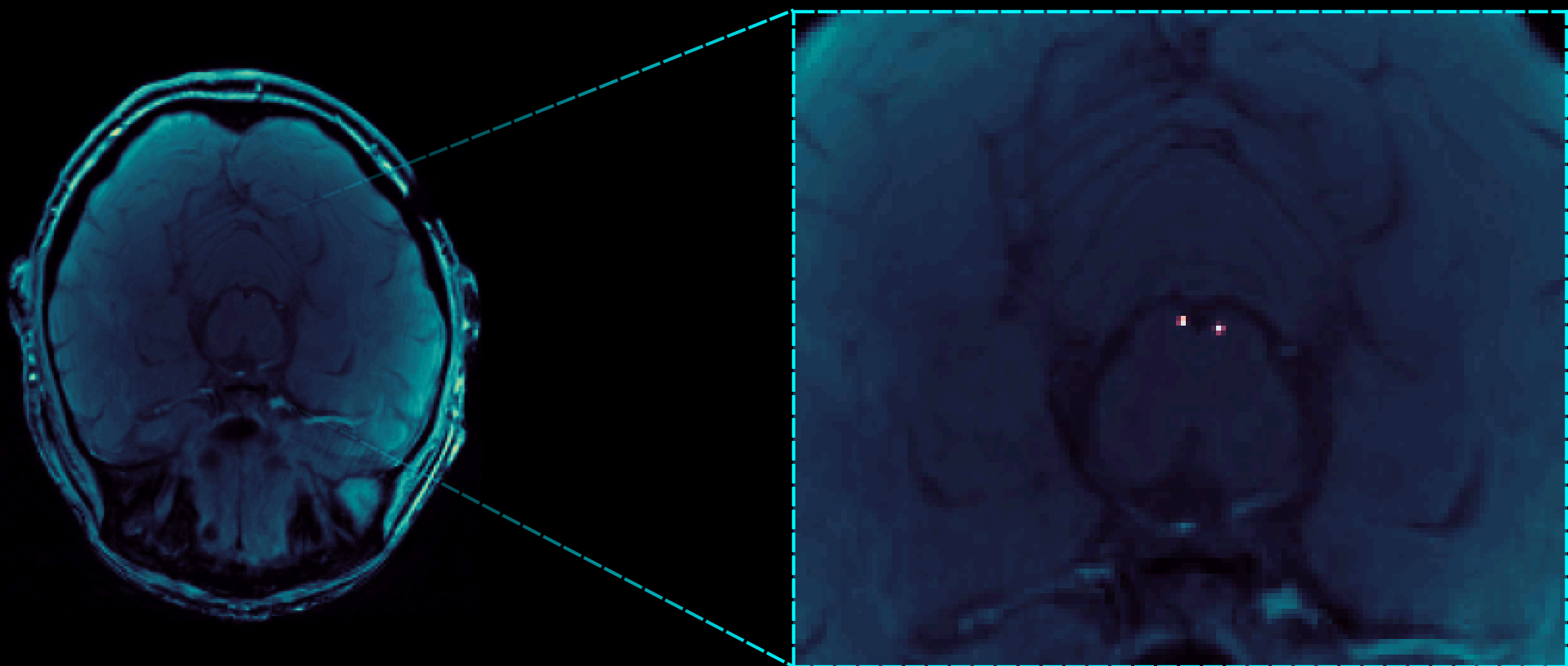
**PROMOTER:**

JANUSZ JABŁONOWSKI

**TEAM:**

KORNEL HOWIL  
SARA ŁUKASIK  
MIKOŁAJ DZIOK  
MACIEJ SZERONS

QR



**LOCUS COERULEUS**, KNOWN AS THE 'BLUE SPOT', IS A SMALL BRAIN STRUCTURE CRUCIAL FOR STRESS RESPONSES. STUDYING THIS REGION REQUIRES PRECISE SEGMENTATION - ISOLATION FROM SURROUNDING AREA. SEGMENTING HELPS RESEARCHERS UNDERSTAND LOCUS COERULEUS ROLE IN HEALTH, INCLUDING **EARLY DETECTION OF BRAIN DISORDERS** LIKE ALZHEIMER'S DISEASE AND DEPRESSION. OUR PROJECT IS TO MAKE THIS TASK AS SIMPLE AND INTUITIVE AS POSSIBLE.

